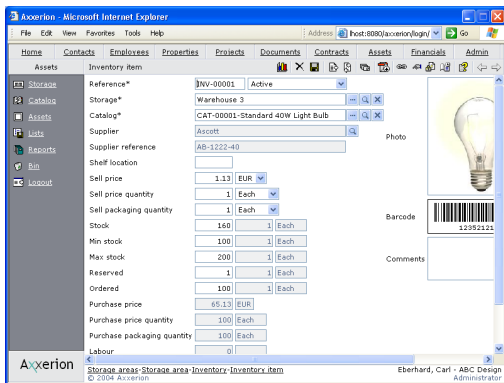
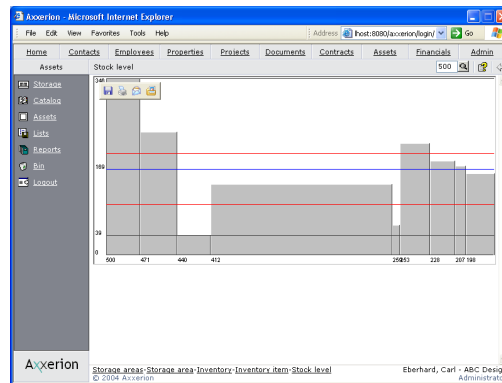


Inventory management

The inventory management module helps you to keep track of inventory levels in various warehouses. You can define minimum and maximum stock levels, prices and packaging units. Purchase orders for suppliers can be created automatically and you can see the transaction history for each item. This information can be used to save inventory expenses and to optimize the ordering strategy.



The information in the read-only fields is linked to the catalog.



Stock levels of inventory over the last 500 days. The lines show the maximum, minimum and weighted average over the period.

The module can be configured for each user group by setting access rights to fields and functions. You can also define your own processes for modifying or creating data by defining custom workflows. Specific functions for your organization can be implemented on request. The standard functions of this module include:

- **Internet:** You can check inventory levels via the Internet and can even give access to suppliers so that they can keep their product information and stock up to date.
- **Transactions:** The inventory is updated via incoming and outgoing transactions. For each transaction you can track the date, operator, type of items and number of items.
- **Purchase orders:** After selecting a supplier the system can automatically find the items that needed to be added to the purchase order based on current, minimum and maximum stock. The inventory units and quantities are automatically converted to order units.
- **Units:** For each product you can define separate units for currency, dimensions, weight, price and packaging. The units can be converted automatically for creating reports and purchase orders.
- **Documents:** All documents related to an item can be uploaded and attached so that they can be viewed online. Examples are user manuals, license agreements, photos or instruction videos.
- **Charts:** Inventory levels can be displayed as charts so that you can quickly see changes in inventory levels over time and possible oversteps of the minimum or maximum inventory levels.
- **Catalog:** Items in a different inventories can be linked to a supplier catalog so that general information can be maintained in one place.
- **Suppliers:** Information on suppliers such as payment terms and conditions can be managed in the integrated contact module. You can link documents and define custom attributes.
- **Export:** Inventory transactions, stock levels and purchase orders can be exported to other systems.

Axxerion

Axxerion includes a suite of integrated modules that help you to run your day-to-day business processes more efficiently. Every module deals with a certain aspect such as management of documents, contacts, assets, contracts, properties or projects. You can start with just one or two modules that complement your existing infrastructure, for instance to manage a project or set up a complaint handling system. Access to the various

modules can be specified per user group by setting up access permissions.

Axxerion is based on the latest Java J2EE technology, which enables support of almost all industry standard databases and hardware platforms. The design complies with a standard Model-View-Controller architecture and takes full advantage of technologies such as session beans, entity beans and transactions. All graphical interaction for designing workflows or annotating documents is implemented using Java applets so no browser plug-ins are required.

Axxerion was founded in 2003 with the objective to develop technology that enables persons and organizations to work together via Internet in a cost effective and efficient way. The technology has been designed for organisations that need better tools than just email and spreadsheets, but find traditional enterprise information systems too complex and expensive. Axxerion focusses on small organizations that need an integrated solution for data and process management, and on large organizations that need to exchange data and processes with departments, subsidiaries, customers and suppliers.